

MONTHLY MEMBERSHIP PROGRESS REPORT

LOCATION INDIA

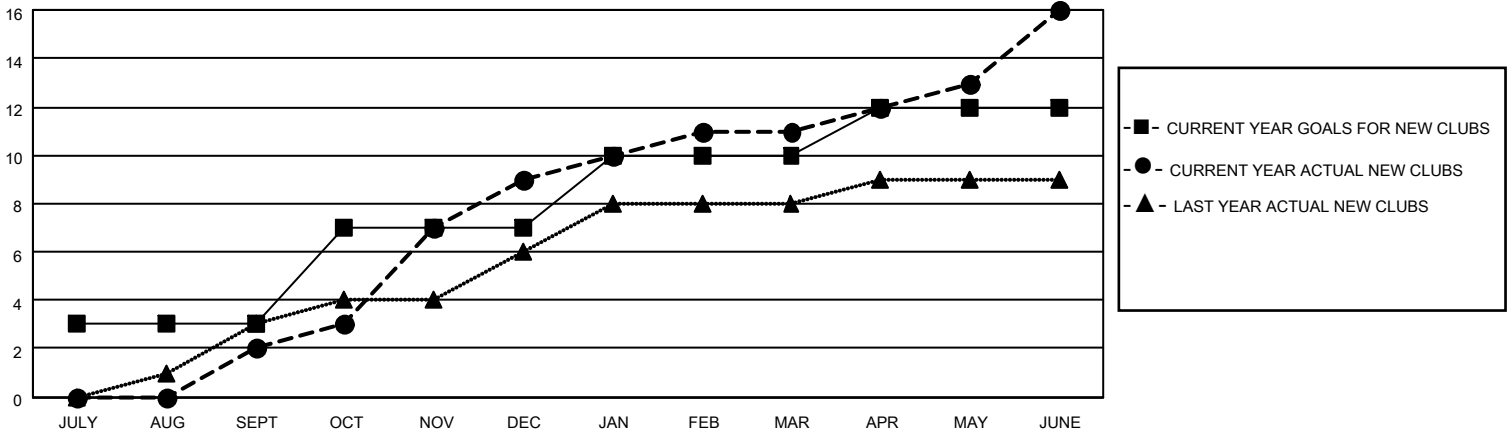
District 318 C

Results as of: 6/30/2022

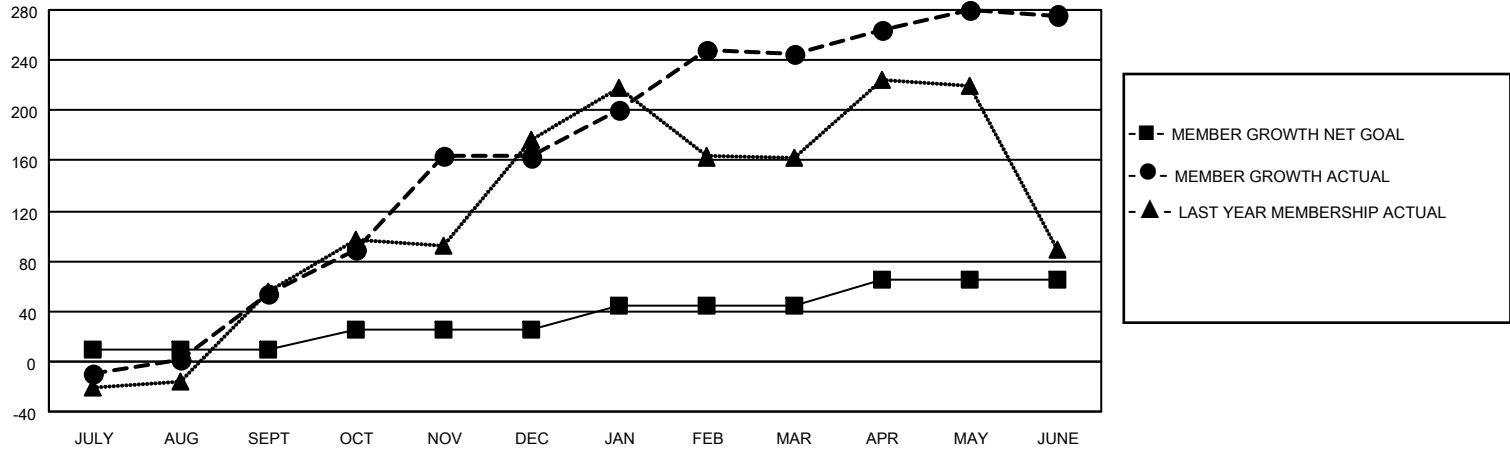
Clubs			
RESULTS FOR 2021-2022			
QUARTER	NEW CLUB GOAL	NEW CLUBS	DROPPED CLUBS
JULY/AUG/SEPT	3	2	0
OCT/NOV/DEC	4	7	1
JAN/FEB/MAR	3	2	1
APR/MAY/JUNE	2	5	1

Members			
RESULTS FOR 2021-2022			
QUARTER	MEMBER GROWTH NET GOAL	MEMBER GROWTH ACTUAL	DROPPED MEMBERS ACTUAL (including transfers)
JULY/AUG/SEPT	10	112	54
OCT/NOV/DEC	15	237	125
JAN/FEB/MAR	20	135	52
APR/MAY/JUNE	20	259	225

GOALS AND ACTUAL NEW CLUBS CUMULATIVE



GOALS AND ACTUAL MEMBERS CUMULATIVE



DROPPED CLUBS: 3

79 CLUBS OF 142 ADDED 1 OR MORE NEW MEMBERS

GENDER DISTRIBUTION

MALE	3,879 (86.10%)
FEMALE	626 (13.90%)
NON BINARY	0 (0.00%)
PREFER NOT TO ANSWER	0 (0.00%)

DROPPED MEMBERS

[CLICK HERE FOR CUMULATIVE MEMBERSHIP DATA](#)

DECEASED	25
CLUB CANCELLED	52
OTHER	379
TOTAL	456

TOTAL FAMILY UNIT MEMBERS 1,149

FAMILY MEMBERS PAYING HALF DUES 615